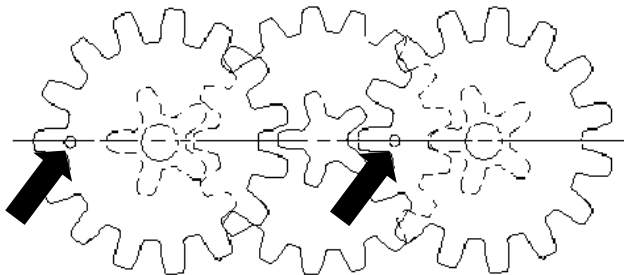


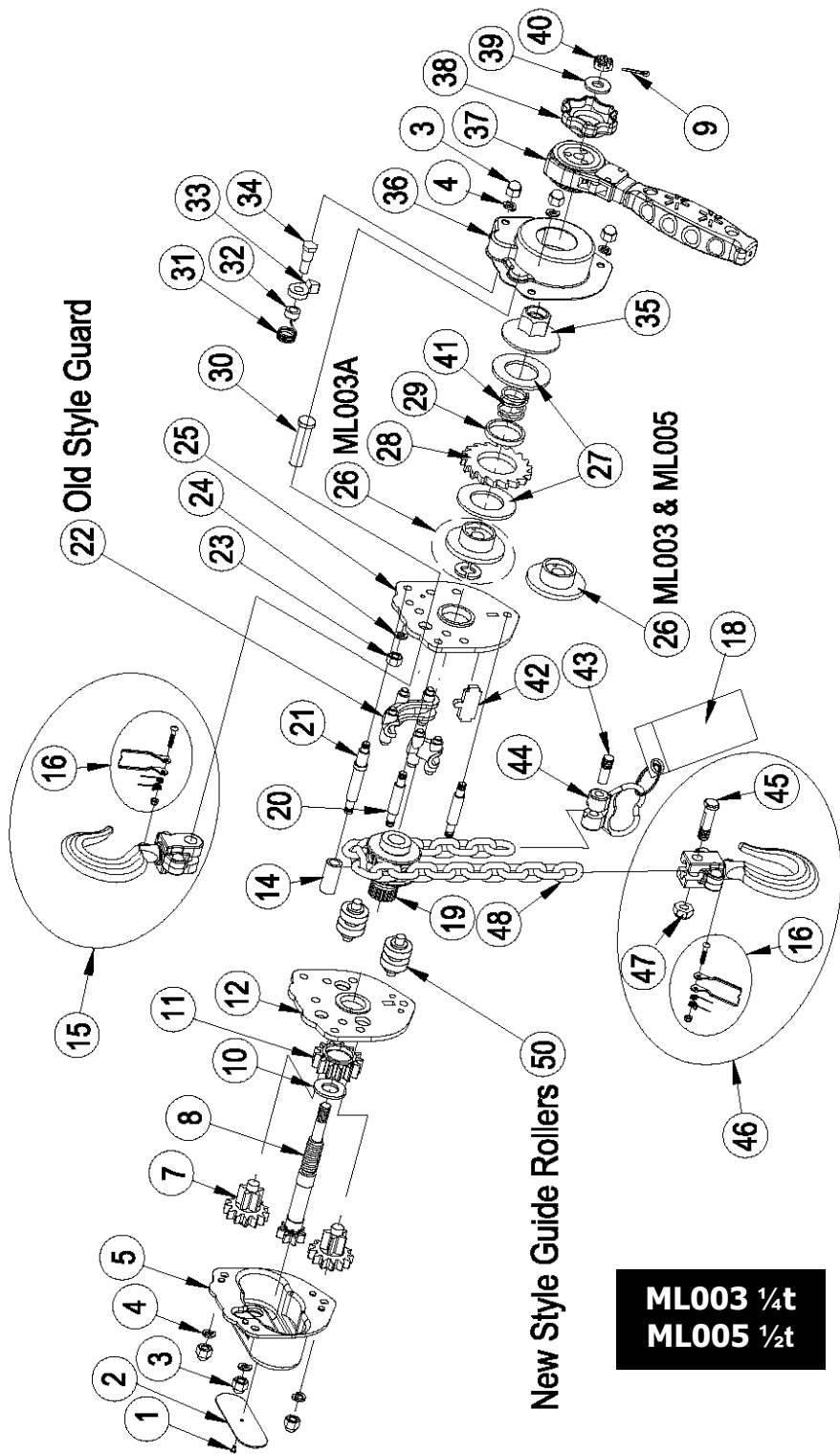


(WLL) MIN

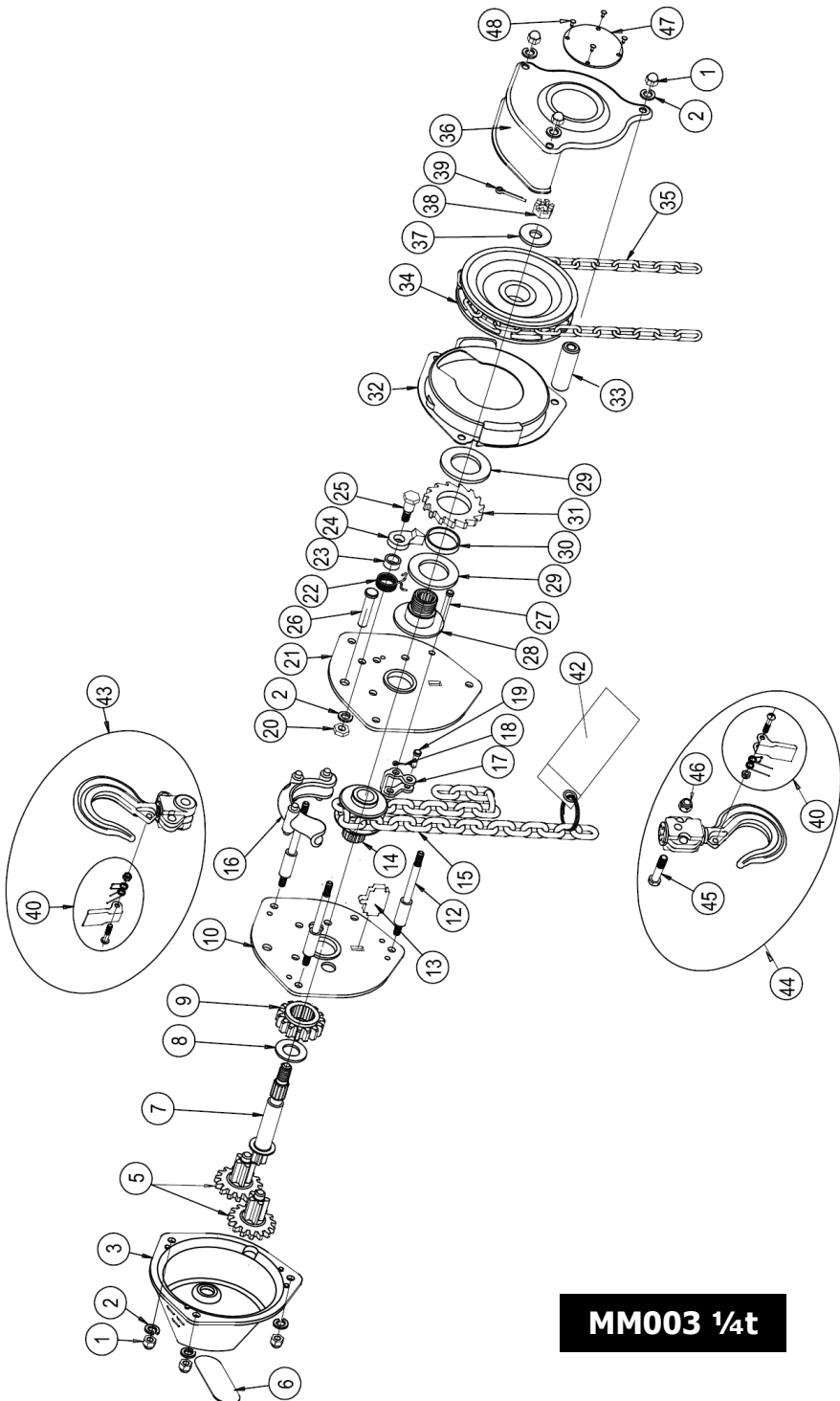
(WLL) MAX

		(WLL) MIN	(WLL) MAX
MM003	1/4t	-----	550 lb (250kg)
ML003	1/4t	33 lb (15kg)	550 lb (250kg)
ML005	1/2t	40 lb (18kg)	1,100 lb (500kg)





ML003 1/4t
ML005 1/2t



MM003 1/4t

* Recommended, Recommendé, Recomendado

	MM003 (1/4t)	ML003 (1/4t)	ML005 (1/2t)
1	P-MM003-1	P-M2.5X6 SCREW DRIVE	
2	P-MM003-2	P-NPL-ML003	P-NPL-ML005
3	P-MM003-3	P-MM003-1	P-ML005-3
4	P-Not Sold	P-MM003-2	P-ML005-4
5	P-MM003-5	P-ML003-5	P-ML005-5
6	P-NPL-MM003		
7	P-MM003-7	P-ML003-7	P-ML005-7
8	P-MM003-8	P-ML003-8	P-ML005-8
9	P-MM003-9	Not Sold	Not Sold
10	P-MM003-10	P-ML003-10	P-ML005-10
11		P-ML003-11	P-ML005-11
12	P-MM003-12	P-ML003-12	P-ML005-12
13	P-MM003-13	P-MM003-11	P-ML005-13
14	P-MM003-14	P-ML003-14	P-ML005-14
15	C4X12Z	* P-MM003-43	* P-ML005-15
16	P-MM003-16	* P-MM003-40	* P-ML005-16
17	P-MM003-17	* WARM-L	
18	Not Sold		
19	P-MM003-19	P-ML003-19	P-ML005-19
20	P-MM003-20	P-ML003-20	P-ML005-20
21	P-MM003-21	P-ML003-21	P-ML005-21
22	P-MM003-22	P-ML003-22	P-ML005-22
23	P-MM003-23	P-MM003-20	P-ML005-23
24	P-MM003-24	P-MM003-2	P-ML005-24
25	P-MM003-25	P-ML003-25	P-ML005-25
26	P-MM003-26	P-ML003-26A	P-ML005-26
27	P-MM003-27	* P-MM003-29	* P-ML005-27
28	P-MM003-28	P-MM003-31	P-ML005-28
29	* P-MM003-29	P-MM003-30	P-ML005-29
30	P-MM003-30	P-MM003-26	P-ML005-30
31	P-MM003-31	P-MM003-22	
32	P-MM003-32	P-MM003-23	
33	P-MM003-33	P-MM003-24	
34	P-MM003-34	P-MM003-25	P-ML005-34
35	C3X15Z	P-ML003-35	P-ML005-35
36	P-MM003-36	P-ML003-36	P-ML005-36
37	P-MM003-37	P-ML003-37	P-ML005-37
38	P-MM003-38	P-ML003-38	
39	Not Sold	P-MM003-37	P-ML005-39
40	* P-MM003-40	P-ML003-40	P-ML005-40
41	* WARM-M	P-ML003-41	P-ML005-41
42		P-MM003-13	P-ML005-42
43	* P-MM003-43	P-ML003-43	
44	* P-MM003-44	P-ML003-44	
45	P-MM003-45	P-MM003-45	P-ML005-45
46	P-MM003-46	* P-MM003-44	* P-ML005-46
47	P-NPL-MM003B	P-MM003-46	P-ML005-47
48	P-M2.5X6	C4X12Z	C5X15Z
50		P-ML003-50	P-ML005-50