



Dist: adirsw

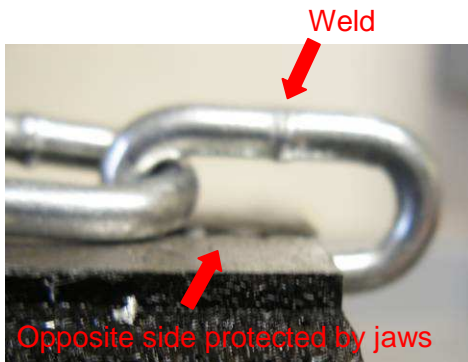
Manual Chain Hoist Hand Chain Connection

Bulletin: **SB028**
Effective: May 18, 08
Page 1 of 2
By: T. Gagnet

Instruction for hand chain loop assembly

1. Hand chain is oversized greatly as it must be large enough to be gripped by hand. The pull required to lift maximum capacity is many times less than the capability of the chain. This allows connection of hand chain loops by a simple split link that is easily formed by cutting and bending a link taken from the chain.
2. Remove a link from the chain by cutting at the weld. The cut can be made by using bolt cutter, cut off wheel or saw.

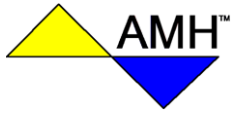
CAUTION, If cut by other than bolt cutter then protect the link from being damaged on the side opposite the cut. It is best to position the link in a vice so that the side opposite is lower than the vice jaws to protect it from being nicked by the cut off wheel or saw as it cuts through.



**Inspect the cut link for nick on the side opposite the cut.
A link that is nicked may break at assembly during bending or later when in use.**

3. Twist open the link with pliers to allow the other end of the chain to be inserted.





Manual Chain Hoist Hand Chain Connection

Bulletin: **SB028**
Effective: May 18, 08
Page 2 of 2
By: T. Gagnet

Dist: adirsw

4. Prior to attaching the other end of the chain loop, make sure that the chain is not twisted. This may be easier if the hand chain is assembled, through the hoist, and preferably if the hoist is hanging from the top hook. Attach the other end of the loop by bending the link back to its original shape and smooth any rough edges with a file.

CAUTION: Opening and closing of the connecting link more than twice is not recommended. If changing the loop length for a new application, a new connector link should be made.

NOTE: More than one connector link may be used in a loop to add more chain length.



Installed connector may vary in appearance depending on method and technique

